

SUSTAINABLE DEVELOPMENT GOALS



Let's be sustainable!

i f M e c
· Facilitating Excellence ·

f m n
Facility Management Nederland

SDG
HOUSE
Utrechtse
Heuvelrug



Ifmec and FMN (Dutch Facility Management association) share the opinion that sustainability within a business must be embedded within the department of Facility Management. By creating a sustainable working climate, employees will be stimulated to go for more sustainable solutions in their work.

This leaflet, in combination with the specially developed video-recordings from SDG-House Zonheuvel, will help you to integrate the United Nations sustainable goals within the facility policy of your company. Achieving the Sustainable Development Goals (SDGs) is a major challenge around the globe and can only be achieved if all companies will do their part.

In this leaflet we will show you the different SDGs and how Facility Management can contribute to the achievement of these goals.

About us:

FMN is the Dutch Facility Management trade union. The main goals are to keep track of the trends and developments within the facility field. The SDGs are highly valued by FMN.

Ifmec is the International Facility Management Expert Centre, located at the Campus estate Zonhevel. This estate has an important function as a national SDG-House and fulfills a networking role. Ifmec is actively involved in the development of the SDG-goals within this network.

The corporation between these parties has led to this leaflet and the accompanying video production: 'let's be sustainable'. This leaflet shows you what you can do in the field of Facility Management to help the realization of the SDGs. The videos will provide practical examples about the steps that have been taken by other companies.

Be inspired. Let's be sustainable.





This leaflet is a 'living document'. You can navigate this document by clicking on the videos, logos, and the SDGs. Would you like to watch the videos directly? Visit: www.ifmec.nl/sdg

In the different videos, Alycia Biekram (Inclusio), Wim Oolbekink (SDG House Utrechtse Heuvelrug) and Yvette Watson (PHI Factory) will guide you through the various options that Facility Management has to offer in the realization of SDGs.

Why does Facility Management influence the success of realization of the SDG's?

Facility Management...

- ... has a long-term focus within businesses and is partly responsible for its continuation;
- ... can translate the SDGs from a corporate level to practical best practices;
- ... can influence behavior by creating a sustainable work environment.

SUSTAINABLE DEVELOPMENT GOALS

1 NO POVERTY



2 ZERO HUNGER



3 GOOD HEALTH AND WELL-BEING



4 QUALITY EDUCATION



5 GENDER EQUALITY




6 CLEAN WATER AND SANITATION



7 AFFORDABLE AND CLEAN ENERGY



8 DECENT WORK AND ECONOMIC GROWTH



9 INDUSTRY, INNOVATION AND INFRASTRUCTURE



10 REDUCED INEQUALITIES



11 SUSTAINABLE CITIES AND COMMUNITIES



12 RESPONSIBLE CONSUMPTION AND PRODUCTION



13 CLIMATE ACTION



14 LIFE BELOW WATER



15 LIFE ON LAND



16 PEACE, JUSTICE AND STRONG INSTITUTIONS



17 PARTNERSHIPS FOR THE GOALS



SUSTAINABLE DEVELOPMENT GOALS

1 NO POVERTY



Facility Management

directly affects an inclusive society, because of its low-threshold access to the employment market for the underprivileged.

The field of facilities

commits to full-fledged work for everyone.

Poverty in the Netherlands?

The Netherlands is one of the wealthiest countries in the world. And yet, 1.2 million Dutch people struggle to make it to the end of the month with their income. 500.000 people live below the poverty threshold and over 100.000 people have to use the food bank. These numbers keep on growing!

Living below the poverty threshold could result in a wide variety of problems:

- Reduced access to healthcare;
- Homelessness;
- Food shortage ;
- Diminished self-cultivation.

1.2 million people, or roughly 1 at 14 Dutch People can barely make it through the end of the month.



That's the same amount as all the inhabitants of Amsterdam and Utrecht together!

Marjolein Reijs
GOM

“

We find it important as an employer to be able to add value for the long term.



”



“

Poverty directly and indirectly is a huge problem.



”

Kees Blokland
Code Commissie Verantwoordelijk Marktgedrag

“

People are so ashamed of their debt, that it takes 5 years to come forward. After 5 years, the debt only increases.



”

Ron Steenkuijl
ADG Dienstengroep
Nederlandse Schuldhulproute

2 ZERO HUNGER

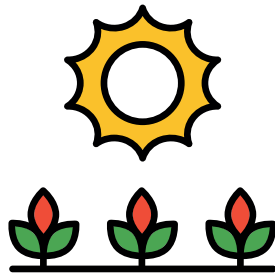


Due to the the growing world population and a decreasing fertility of farmland, it will become increasingly difficult to provide food for the entire population.

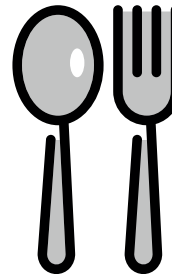
What can FM do?

The field of facilities:

- Pays attention to the origin of food (procurement);
- Stimulates consumption of a more healthy diet (nudging);
- Fulfills a key-role in reducing waste (measuring is knowing)



Sustainable: produce food in a better way



Change consumption patterns



Reduce food waste

Ken Giller | Wageningen University

The University of Wageningen speaks about experimenting with local suppliers and fresh products. By shortening the supply chain, suppliers barely need processed products.

“

*40%
of all food
is wasted.*



”

“

*No-show is
one of the
biggest causes
of waste.*



”

Bruce Westeneng | Bestel Bewuster

“Bestel Bewuster” integrated a program within Outlook, with which business lunches are ordered digitally. The result? A 50% decrease in food waste. Employees chose for a healthier lunch.

3 GOOD HEALTH AND WELL-BEING



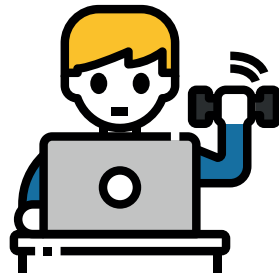
Building is no longer possible without attention from FM regarding safety and hygiene.



Facility Management and HRM enter a dialogue with employees about an optimal work environment after COVID-19: at the office and at home.

What can FM do?

Investing in a healthy and sustainable work climate increases the vitality and mood of employees, and lead to better performance. At the office and at home.



Workplace design:
encourage movement



Biodynamical
lighting



Pay attention to
the workplace at home

Martine de Vaan
Rijksvastgoedbedrijf

“ We design the
entire society
to stay inside. ”



“ We spend
90% of our
time withing
buildings. ”



Herman Kok
Wageningen University

Frank van der Leest
VGZ

“ The winter
depression is
caused by a
lack of light. ”



“ Behavioral
change is
the biggest
challenge. ”



Nils Bonder
BAM Concernhuisvesting

4 QUALITY EDUCATION



For the sake of the world's future, attention for sustainable issues in education is needed.

The **field of facilities** connects the higher and lower management for an inclusive society.

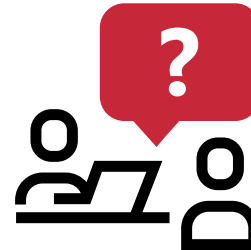
What can FM do?

Facility Management

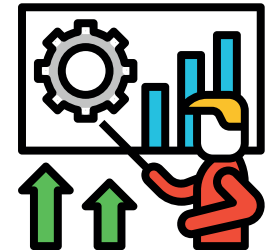
decreases the distance to the employment market. It is the ambition to be able to provide everyone with equal access to quality education and lifelong learning by 2030, at a technical or higher level.



Provide vocational and language education to migrants



Personal coaching at work, when needed



Make performance visible

Marco Gramser
CSU

“ We need to look
at the person
behind the
employee.”



“ DG4 plays
a role in the
accomplishment
of all other
SDGs.”



Frans Melissen
Breda University



“ People
must enjoy
learning.”



Stefan Hogervorst
Deksels Lekker

5 GENDER EQUALITY



FMN, the Dutch Facility Management association has 600 female and 750 male members.



In the FMN Young community, over 50% is female. However, these numbers don't give information about the position, role, and salary of these women.

Gender equality in the Netherlands:

The Netherlands is behind the European average regarding equal treatment of women. The ambition for higher business functions is to be 30% women by the year 2030.

Even in 2021, men have a higher salary than women.

In businesses, men earn an average of 22 euro/hour. Women earn 18 euro an hour.

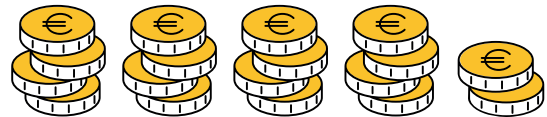
Gender discrimination undermines our social network

and means a diminishing value for us all. Not only is it all about human rights, but also about a huge waste of the global human potential.

*In business, men earn
22 euro/hour on average.*



*Against women who earn
18 euro an hour on average.*



Lyda Smits
Excellent-She

“

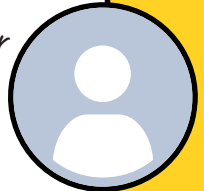
Everybody knows that nowadays women are faster and higher educated. Yet, due to the parttime culture they don't choose a fulltime job. The knowledge perishes because it won't be used to its full potential. It is talent waste.

”



“

Sometimes you get there faster alone, but you get further together.



”

Maartje Bouvy
Falicom Group

“

Cultural differences between countries have an adverse effect on gender equality.

”



Jeroen Beks
Engie

6 CLEAN WATER AND SANITATION



The Netherlands, as a 'water-land' has an international reputation to maintain. Water scarcity and an excess of water have the nations full attention.

Despite our good name, barely 50% of our surface water meets the ecological quality requirements.

What can FM do?

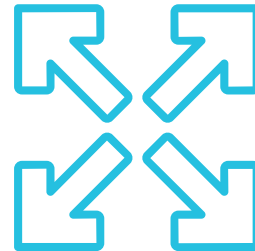
Facility Management

can monitor the usage and quality of water within company's and agencies.

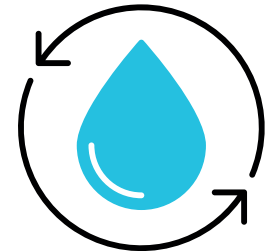
It pays off when FM develops a road map regarding all areas of water(usage).



Use water efficient installations



Separate drinking water



Collecting and reuse of water

Wilfred Schipperen
SMO Breda

“

*I find it important
to keep developing within
the roadmap.*



”



“

*You need
approximately
8.600 litres of
water to produce
1 kilogram of meat.*



”

Christel Simmelink
Waternet

“

*Barely 50% of the surface
water in the Netherland
meets the Dutch quality
requirements.*



”

Rik Oldenkamp
AIGHD

7 AFFORDABLE AND CLEAN ENERGY



Facility management can take the initiative as it comes to the connection with the neighborhood regarding building-exceeding energy plans.



The biggest savings can be realized within the built environment.

Facility management plays a role in sustainable interaction with energy within companies and agencies. It provides an energy neutral housing and promotes a smart way to deal with energy on a daily basis.

A special Co₂ dashboard provides insight as to where the company stands regarding sustainability. It can be used to show all (yet to be) achieved goals.

The Netherlands is far behind the European average in energy transition. Reducing Co₂ is closely related to how we produce energy. Natural gas from Groningen has made us lazy.



Andy van den Dobbelsteen
TU Delft

“

The CO₂ that we expell today with our fossil energy is going to have a huge effect in the future.



”

“

I think it is not only the production of energy, but also energy saving.



”

Floor van Dalen
Vattenfall

“

In the Netherlands we have 9 million buildings that need to be made sustainable.



”

Suze Gehem
De Groene Grachten

8 DECENT WORK AND ECONOMIC GROWTH



In the Netherlands, large groups of people are excluded from honest work and economical independence. These numbers are growing.



A lot of experiments with people who lag behind in the employment market are initiated in the **field of facilities**.

What can FM do?

FM is the place where an all-inclusive economy can start. Not only to provide or seize opportunities, but also to create value. Despite all anti-discrimination legislation, practice shows that it is not working.



**Affect general
working
conditions**



**Lowering the threshold
to the employment
market**



**Creating a healthy and
environmentally friendly
workplace**

Etienne Friederichs | Buitengewoon

'Buitengewoon' is an employment agency, who is committed to the operational workforce and their career opportunities within a company.



As soon as you have receive so much gratitude from the people you have helped... You will remember that forever.

“

A lot of people make the mistake to believe that people do not want to do the work. But there is just a lot of anxiety.



”

Mireille Geijsen | I-did

I-Did uses depreciated corporate textiles to make brand new products, for which they hire and coach people who are lag behind in the employee market.

9 INDUSTRY, INNOVATION AND INFRASTRUCTURE



FM business operations can be used as fundamental way to infuse sustainable initiatives within the whole organization.

What can FM do?

More research is needed about making the industrial sector more sustainable by using technological innovations. The acquired knowledge has to be shared on an international platform.



**Start with a
long-term vision**



**Share knowledge
within the chain**



**Involve young people
in sustainability**

Inge Knapen | Rijkswaterstaat

“Rijkswaterstaat” (Department of Waterways and Public Works) is responsible for making the Dutch Infrastructure more sustainable. Rijkswaterstaat starts at the base: making daily operations more sustainable.



“

You have to search facility contracts for innovation, to see how far the market has evolved.

”

“

There is a natural tendency in young entrepreneurs to keep evolving the techniques that they have started working with at the university.



”

Jan Peter van den Toren | Birch

Birch Consultants helps to create an ecosystem of collaboration between organizations, government and knowledge institutions. As one company you can do a bit, but as a group you can achieve much more.

10 REDUCED INEQUALITIES



The **field of facilities** is able, due to its low threshold to the employment market, to be the starting point to reduce inequality.



Work plays a key-role in reducing inequality. It is all about the human standard. Do not only be aware of this, act accordingly.

It is the **Facility Managers' job** to make sure employees feel valued and at comfort within the organization.

Between 1990 and 2010 there was a 11% increase in the gap between lower and higher incomes. Eventually this can lead to social instability.

The 40% poorest people need to have a higher revenue increase, than the other 60%.



“

As soon as too many people have to live an inhumane existence, the stability of this society is at grave danger.



Martin de Jong
Erasmus Universiteit

”

“

I think facility employees are too often undervalued.



Diane Kockelkoren
Vebego

”

Anja In 't Velt
Van Gogh Museum

“

If you want a sustainable department of facilities, you have to talk to the suppliers and service providers.



”

11 SUSTAINABLE CITIES AND COMMUNITIES



The municipality plays a large role in SDG 11, but companies can do their part when it comes to housing.



FM can contribute to a sustainable grow by smart maintenance. Sustainable and intelligent buildings will help to lower the CO_2 emissions.

You will find all SDGs in a city. Cities keep growing. How sustainable is this growth? To ensure the livability, a lot of initiatives are needed. That's why it is important for building managers to think about the contribution of a building to a sustainable environment.

Facility Management will place the corporate housing in this environment and seeks a connection with all stakeholders, to increase the sustainability and livability. Not only when it comes to safety, but also regarding waste processing, accessibility, mobility and the energy transition.



Olaf Müller | U4SSC

United 4 Smart Sustainable Cities compares how SMART and sustainable cities really are, by measuring three major segments: infrastructure, Internet of Things and transport within the public space.



At first, we have to decide how SMART and sustainable we actually are and what subjects are most important to us, before we can improve them.

“

It is important to consider the quality of the public space within the close proximity of a building.



”

Rinus Vader | Royal Haskoning DHV

Royal HashkoningDHV looks at how a building can contribute to a city. For example: by letting pedestrians use the main floor to walk through, layout of squares and use ‘green buildings’ from the outside.

12 RESPONSIBLE CONSUMPTION AND PRODUCTION



Sustainability will be a part of external business reports. Could **FM** become an important supplier of information?



The **Facility Manager** is uniquely of influence regarding the circular prestation of a business, because of the influence in procurement, usage, and waste.

What can FM do?

The way we produce and consume will inevitably lead to a depletion of natural resources.

Less waste and a circular production are needed to prevent this from happening.



Inventory of household effects



Tempt to make sustainable choices



Connect (supply)chains

Koos Wagenveld
HAN

“

You have to think about how to incorporate circularity within all processes.



”

“

You can only do something right, if you know what is going on within your organization.



”

Marc van der Heijden
TRIBOO

“

It is all about temptation. Thus, you need to make your actions more visible.



”

Rob Klinkert
PWC

“

You have to ask different questions for sustainable products to come into the market.



”

Tjeerd Steendam
FMHaaglanden

13 CLIMATE ACTION



WakaWaka published the “Draw Down”, in which you can find the top-100 solutions in countering the effects of climate disruption.

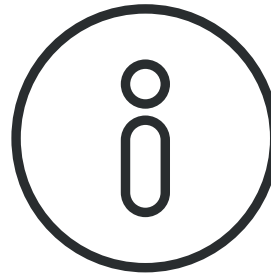
The top-100 is composed and calculated by scientist and provides a source of inspiration for **FM**-professionals.

What can FM do?

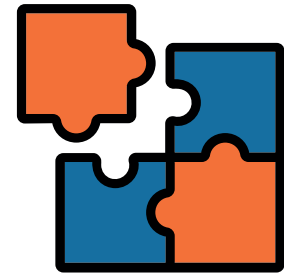
The temperature on earth is rising fast because of the gasses we expel. To prevent it from rising any further, actions are needed. That is what the Paris climate agreement 2015 is for.



Inspire with sustainable solutions



Inform about sustainable solutions



Integrate sustainable solutions

Maurits Groen
Wakaka Foundation
Kipster

“

If all countries realize all their plans in time, we will still get above 3 degrees.



”

“

The built environment is responsible for 50% of all CO₂ emissions.



”

Christa Beaufort
ABN AMRO



“

The most green variant of energy, is the energy you don't use.



”

Theo Peters
Achmea

14 LIFE BELOW WATER



Humans are responsible for a lot of pollution in the sea, and due to overfishing more and more fish disappear from the oceans every day. We recognize the problems but do not take enough action.



Nano parts of plastic waste ends up in the fish we consume. We take out fish faster than they can reproduce.

Mainland waste problems shift to the sea.

The FM professional has insight in usage and waste and has an influence on employee behavior. The main objective should be the prevention of pollution. To accomplish this goal, alternative products without negative effects to the environment are needed.

As an FM-professional: study the entire chain. From the origin to the manufacturing and eventually where the product ends.

Prioritize the environment above revenue.



“

*We make cheap products and
get the bill through
our nature.*



”

Hein Pieper
Waterschap Rijn en IJssel

“

*Stop with the
procurement
of single-use
items.*



”

Michael van der Meer
PHI Factory

Wim Uijtewaal
TU Delft

“

*World-wide, tens of million
tons of plastic waste end
up in the oceans.*



”

15 LIFE ON LAND



Next to climate change, there is an issue of diminishing biodiversity. It is up to the **FM**-professional to close the gap between men and nature.

One way of doing so is by the construction of 'green rooftops'. This will also double the lifespan of a rooftop.

What can FM do?

One problem when it comes to increasing the biodiversity is the lack of recognition that it could be a part of our surroundings. We must change this.



Create awareness



Assume an exemplary role



Sustainable tender

Jan Henk Tigelaar
Rooftop Revolution

“

*Investment in nature
will pay off so much.*



”

“

*One fourth of all
animal life can be
found within a city.*



”

Max Beijneveld
Gemeente Amsterdam



“

*The nature
should be our
partner, not
our slave.*

”

Jan Terlouw
schrijver & oud-politicus

16 PEACE, JUSTICE AND STRONG INSTITUTIONS



Peace, safety, and justice contributes to a sustainable development of society.



The physical and digital accessibility of public institutions is important to all. **FM** can contribute to this.

SDG16 seeks a peaceful and safe society.

Feeling insecure, vulnerable, and uncertain has a huge impact on a life. (In)security thus has a huge impact, objectively and subjectively, on the broad welfare in the present.

The contribution to sustainability needs to come from everyone. Everything can and should be said.

Everyone's qualities are involved. The community is open and direct and curious about new ideas.





Be transparent about your actions, so people understand the possibilities and the limitations. They might have suggestions. You do not have to come up with everything on your own.

Carola van Rijsbergen
Gemeente Capelle aan den IJssel

Friso Visser
MUSEON

Inclusivity and diversity are themes of importance. Everybody must do their part and it must do justice to the things that are happening within our population.



17 PARTNERSHIPS FOR THE GOALS



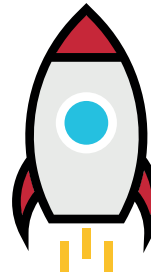
FM is the connecting link between developments in the market and the different parties.

What can FM do?

To achieve the sustainable development goals governments, corporates, and civilians must work together. Change is possible through cooperation. This is essential!



Integrate SDGs in facility-policy



Take the initiative



Seek out partnerships within or outside your own chain or organization

Derk Loorbach
Erasmus Universiteit
DRIFT

“

A large systematical change cannot be achieved alone.



”

Make sure to include everyone in the entire process.

The mindset and the will to change has to made clear to all participants.

Ask them what they want to gain on a personal level and within the organization, and how you can help them achieve their goals.

“

Do not reinvent the wheel, but work together instead.



”

Lotte Gottschal
The Green Business Club

“

Everybody stands before the same transition. We must learn from and challenge each other and take the steps by doing so.



”

Pieter Lems
Nationale Nederlanden

This leaflet is made possible by:



Name	Role	Organization
Yvette Watson	Host	PHI Factory
Alycia Biekram	Host	Incluzio
Wim Oolbekkink	Host	SDG House Utrechtse Heuvelrug
Tiffany Baltus	Project manager	FMN/Ifmec
Niels Peters	Recording & editing	FMN/Ifmec
Joy Peters	Production	Ifmec
Eva Buurma	Production	Ifmec
Ivar Retel	Production	Ifmec
Leo Laanen	Chief editor	Ifmec
Kyara van der Tuin	Production	Ifmec
Inge Bouterse	Editorial	FMN/VDH
Emiel Janssen	Graphics & design	SBI Beheer
Laura Beckers	Editorial	Ifmec
Silke Hermans	Editorial	Ifmec
Friso Visser	SDG coordinator	MUSEON





fikks



FM Haaglanden
Ministerie van Binnenlandse Zaken en
Koninkrijksrelaties

fmn
Facility Management Nederland

FUJIFILM

**X Gemeente
X Amsterdam
X**

gemeente **Capelle**
aan den IJssel

Gom

**Green
Business
Club**

Hago
Next

HAN UNIVERSITY
OF APPLIED SCIENCES

i-did

i f M e c
· Facilitating Excellence ·









Knowledge center for Facility Management since 1994.
ifmec@ifmec.nl | www.ifmec.nl | +31 (0)50 501 74 09

Ifmec is a partner of the SDG-House Doorn
www.sdghousedoorn.nl